

Atlas



Discover a **New** World
of **Digital** Hearing



oticon
PEOPLE FIRST



Atlas delivers clear, comfortable digital sound.

Discover **Atlas**



Affordable. Outstanding.
Straightforward.

Atlas is a new hearing aid that sets the standard for high-quality digital hearing care at a more affordable price.

Atlas offers outstanding digital performance. It's fully automatic and has a clear, comfortable digital sound. It's also highly reliable and offers top-class cosmetics.

Exceptional ergonomics and a minimum of controls make daily use of Atlas straightforward.

Which is why Atlas puts digital hearing on the map for more people.

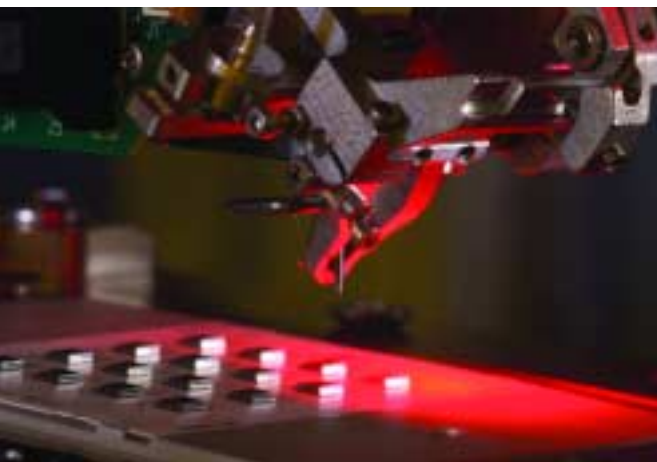


Atlas
by Oticon

Affordable

In 1995, Oticon introduced the world's first digital hearing instrument. Since then we've further developed our knowledge of high performance digital hearing care.

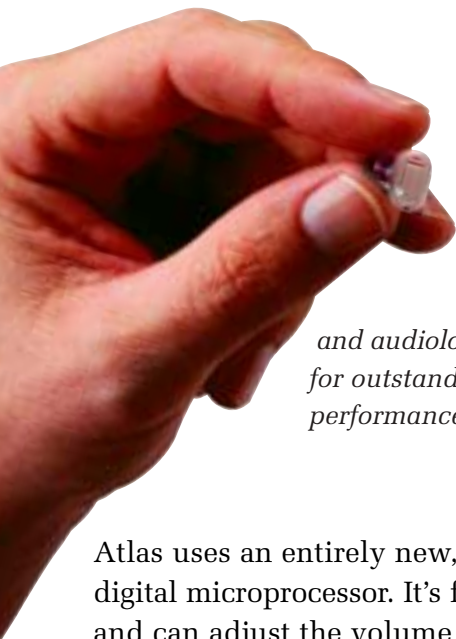
Atlas hearing aids are designed for industrial manufacture. Robotics and advanced machinery let us offer a high performance solution at an affordable price. Our production expertise also ensures a consistent product quality and exceptional reliability.



The highly advanced manufacturing process ensures consistent high quality reliability.



Outstanding



Atlas is based on proven technological and audiological principles for outstanding sound and performance.

Atlas uses an entirely new, advanced digital microprocessor. It's fully automatic and can adjust the volume level in a matter of milliseconds. It automatically amplifies soft sounds to make them audible, while controlling loud sounds so they never become uncomfortable.

Atlas is individually personalised to match your exact needs.

Your hearing care professional uses a special computer program based on our experience with millions of hearing aid users. So it ensures that you get precisely the amplification you require.

With Atlas you'll hear sounds you haven't heard for years. It can take time to get used to this new world of sounds. So Atlas has a special program designed to make your acclimatisation as quick and smooth as possible.

Atlas also has a program that automatically controls and eliminates unpleasant whistling.



Straightforward

Atlas is easy and straightforward to use. With a single push button telecoil and an on/off function integrated in the battery drawer, it can't be easier.

Atlas looks good. You're also free to choose the colours, styles and options that are right for you.

Atlas ranges from a small, attractive Completely-In-the-Canal (CIC) instrument to slim and light Behind-The-Ear (BTE) instrument.



Your hearing care professional will fit Atlas to match your personal requirements.

People first



We believe that it takes more than technology and audiology to create the best hearing instruments. That's why we put the individual needs and wishes of hearing impaired people first in our development of new hearing care solutions.

www.oticon.com
www.hear-it.org

oticon
PEOPLE FIRST